

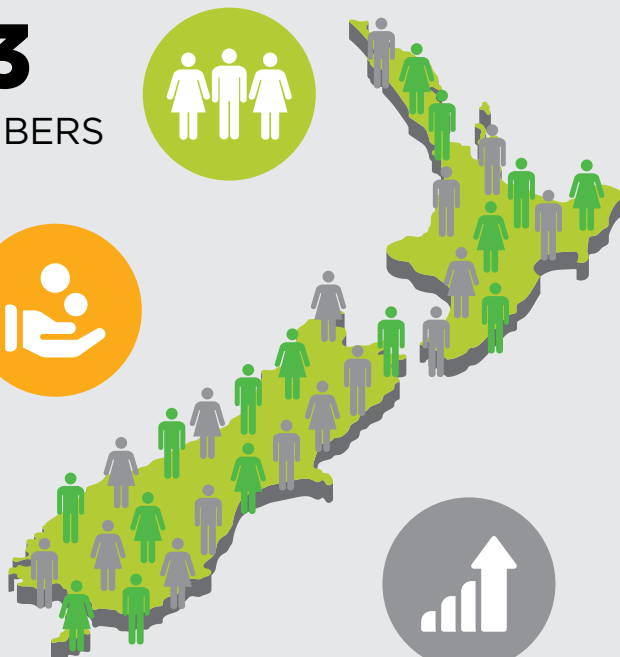
# SPOTLIGHT ON KIWISAVER

## QUARTERLY SNAPSHOT AS AT 30 SEPTEMBER 2024

**3,006,163**  
FSC KIWISAVER MEMBERS



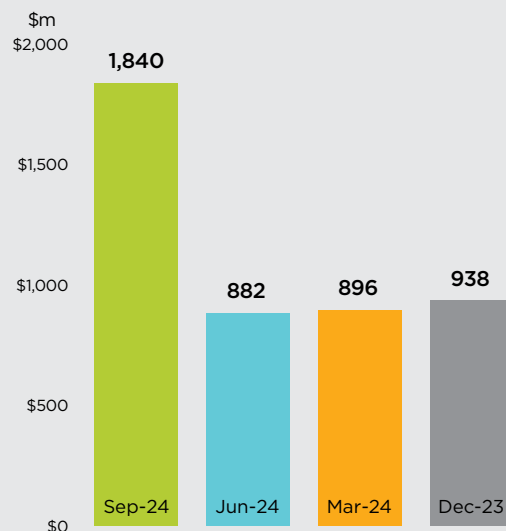
**\$107.25**  
BILLION  
FUNDS MANAGED



**21.2%**  
INCREASE  
IN FUNDS UNDER  
MANAGEMENT  
IN THE 12 MONTHS TO 30 SEP 2024

**0.76%**  
INCREASE  
IN NUMBER OF  
KIWISAVER MEMBERS  
12 MONTHS TO 30 SEP 2024

### QUARTERLY KIWISAVER CONTRIBUTIONS



**\$4.56**  
BILLION

TOTAL CONTRIBUTIONS  
IN THE 12 MONTHS TO  
30 SEP 2024

**\$1.84**  
BILLION



CONTRIBUTIONS  
IN THE THREE MONTHS TO  
30 SEP 2024

**\$35.7K**  
AVERAGE MEMBER  
BALANCE



**\$1,519**  
TOTAL AVERAGE  
CONTRIBUTIONS  
IN THE 12 MONTHS TO  
30 SEP 2024

Source: FSC Quarterly KiwiSaver Statistics, 30 September 2024. FSC statistics cover 92.5% of total KiwiSaver Funds under Management (based on RBNZ data as at 31 June 2024), gathered from FSC members and non-members.